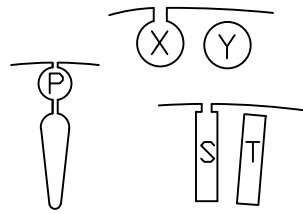
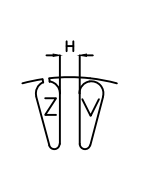
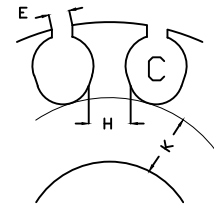
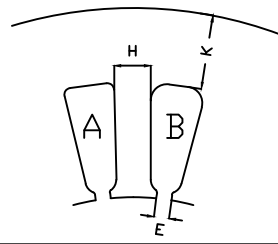




Nuova Volonterio S.r.l.

20010 CORNAREDO - MILANO
VIA GHISOLFA, 63/65 - Tel. 02-9362256/57/878
Fax 02 - 93566013

www.nuova-volonterio.com
e-mail: info@nuova-volonterio.com



STATORI

ROTORI

Mod.	« Yl «]	n. cave	mmq	E	K	H	« Y	n. cave	mmq	H	« ZU'
97 R	33x18	12	A 16.7	1.6	3	1.8	17.4	13	Z 4.38	1.82	7-7.04-7.3
97 R/1							16	Z 4.7	1.2		
97 E							18	V 3.70	0.83	9.05	
97 SC	33x18 (31)						17.4	13	Z 4.38	1.82	7-7.04-7.3
97 SC/1							16	Z 4.7	1.2		
98	42x21.55	12	A 32.67	2.24	3.6	1.7	20.92	17	Z 4.94	1.63	7-9-9.06-9.1-12
98 S	39.90x21.55										
98 A	52x27.5	12	A 47	2.5	4.3	3	26.9	15	Z 8.50	2.54	12-12.1-14
98 A/1								17	Z 9.30	1.87	
98 AR	50x27.5	12	A 47	2.55	5.88	3	27.5	15	Z 8.50	2.54	6-8-10-11-14
98 AR/1								17	Z 9.30	1.87	
98 B	55x27.5	12	A 47	2.55	5.88	3	27.5	11	X 10	2.80	6-8-10-11-14
98 B/1								17	V 9.3	1.87	
98 BF	55x27.5	12	A 43	2	5.85	2.97	30	11	X 10	2.80	10
98 BF/1								17	V 9.3	1.87	
99	60x30	12	A 46,48	2.5	6.87	3.6	29.4	15	Z 12.26	2.6	9-10-12
99/1							30				
100 A	73x38	24	A 29	1.8	9.5	2.16	38	18	V 20	2.07	6-8-10-12-14-15-17-18
100 A/1								17	V 12	2.58	
100 A/2								37.2	18	V 20	
100 A/3	73x38 (68)	24	A 29	1.8	9.5	2.16	37.2	17	V 12	2.58	6-8-10-12-14-15-17-18
100 AS								18	V 20	2.07	
100 AS/1								38	17	V 12	
100 AS/2	73x38 (71/71)	24	A 29	1.8	9.5	2.16	37.2	18	V 20	2.07	6-8-10-12-14-15-17-18
100 AS/3								17	V 12	2.58	
100 AQ								38	18	V 20	
100 AQ/1	73x38 (71/71)	24	A 29	1.8	9.5	2.16	37.2	17	V 12	2.58	6-8-10-12-14-15-17-18
100 AQ/2								18	V 20	2.07	
100 AQ/3								17	V 12	2.58	
100 AR	64x38	12	A 84	2.4	7.2	3.2	38	18	V 20	2.07	8-10-12-14-15-17-18
100 AR/1								17	V 12	2.58	
100 AR/2								37.2	18	V 20	
100 AR/3								17	V 12	2.58	
100 B	73x38	12	A 84	2.4	7.2	3.2	38	17	V 12	2.58	8-10-12-14-15-17-18
100 BS	73x38 (68)										
100 BQ	73x38 (71/71)										
100 D	73x38.5	12	A 86	2.2	7	3.2	38.5	17	Z 19.6	2.6	6-8-10-14
101 C	80x40	18	A 57	1.8	9.75	2.9	40	22	Z 16.5	2.14	15
101 D	80x45	24	A 49,7	2	6.5	2.63	45	22	Z 18,2	2.73	14-15-16-18-22
101 DZ/1			A 50	2.3					Z 21.3	2.3	15-18-22-25
101 DS			A 49,7	2					Z 18,2	2.73	14-15-16-18-22
101 DZS/1	80x45 (72)	24	A 50	2.3	6.5	2.63	45	22	Z 21.3	2.3	15-18-22-25
101 DC	80x45 (78)		A 49,7	2					Z 18,2	2.73	14-15-16-18-22
101 E	80x40	12	A 71	2.5	10	5	40	18	Z 16	2.8	6-8-9-12-14-15-16
101 F	73x40				6.5						
102 B	90x45 (88/88)	24	A 49	2.2	11.5	2.6	45	18	Z 25	2.96	12-15-17-18
102 B/1									16	V 25	
102 C	90x50	24	A 50	2.3	9	3.3	50	22	Z 20	3.2	9-15-16-17-18-20

STATORI							ROTORI							
Mod.	« Yl «]	n. cave	mmq	E	K	H	« Y	n. cave	mmq	H	« ZU'			
102 D	90x47	24	A 38	1.8	12	2.93	47	18	Z 20	3.6	8-12-15-15.2			
102 D/1							32	V 9.5	1.9					
102 D/2							46.1	18	Z 20	3.6		16-17-18-19-20		
102 D/3							32	V 9.5	1.9					
102 E	90x45 (88/88)	12	A 57	2	13.4	7.3	45	16	V 25	3.5	12-15-17-18			
102 E/1							18	Z 25	2.96					
102 G	90x57	24	A 49.5	2.2	6	3.7	57	30	V 16.3	2.94	18-21			
102 N	68	16	C 61.4	2.62		4.15	92x68	22	R 15.5		18			
102 N/1		12	C 74.3	3.1						26.2-27				
102 N/2		16	C 61.4	2.62		4.15				18-26.2-27				
102 P	68	16	C 61.4	2.62		4.15	92x68	22	R 22.5		18			
102 P/1		12	C 74.3	3.1						26.2-27				
102 P/2		16	C 61.4	2.62		4.15				18-26.2-27				
104 A	101x55	24	A 63	2.3	10.5	3.3	55	28	V 16	2.66	16-17-19-20-22			
104 A/1							54.3							
104 AM	110x55	24	A 63	2.3	15	3.3	55	28	V 16	2.66	16-17-19-20-22			
104 AM/1							54.3							
105 A	107x66	24	A 63	2.23	8.6	4.6	66	30	Z 22	3.09	17-18-20-22-23.7			
105 AM	110x66				10.1									
105 AMQ	110x66 (107x107)	24	A 41	2.2	17	4.5	28	V 16	2.66	16-17-19-20-22				
105 BM	110x55 (105x105)										55			
105 BM/1	101x55	24	A 63	2.3	13.5	3.3	55	18	Z 34	4.1	15-16-17-18-19-20-22			
105 BR												15		
105 BR/1												13.25		
105 F	107x55	24	A 63	2.3	15	3.3	55	18	Z 34	4.1	15-16-17-18-19-20-22			
105 FM	110x55											13.25		
105 FR	106.5x55	24	A 61	2	14	3.44	58	18	Z 37	4.1	17-22			
106 B	110x58											18	Z 38	5.35
107 A	125x65 (123/123)	24	A 69	2.2	17.5	4	65	18	Z 38	5.35	17-20-22-24-25			
107 A/1												31	V 10.4	3.7
107 A/2												28	V 28.5	3
107 C	125x70	24	A 97	2.3	10.3	5.2	70	30	V 28	3.4	24-25			
107 CR	120x70											7.8		
107 CA	120x70	24	A 90	2.5	10	4.8	70	30	V 28	3.4	24-25			
107 CAM	125x70											12.5		
107 D	125x62 (123/123)	24	A 80	2.5	18	3.5	62	18	Z 43	4.5	17-22-25			
107 DR	122x62											16.5		
107 DP	120x62	36	A 52	2.3	9.7	3.5	80	30	Z 33	4.24	20-25-30			
107 E/1	125x80											8.2		
107 ER/1	122x80	24	A 74	2.4	15.3	3.82	71	30	Z 25	3.06	17-20-25			
107 F	125x71								V 21	3.68				
107 G	125x80	24	A 72	2.4	9.75	5.3	80	30	Z 33	4.24	20-25-30			
107 GR	122x80											8.25		
108 C	135x86	24	A 87	2.6	11	5.96	86	30	V 37	4.68	20-22-24-30			
108 E	135x80	36	A 69	2.3	12	3.63	80	46	Z 23	2.6	17-24-30-40.5			
108 E/1								28	Z 39.1	4.41				
108 F	135x70	24	A 105	2.5	17.1	3.9	70	18	Z 60	5	17-20-22-24-25-30			
108 F/1								31	V 21.12	3.51				
108 H	135x90	36	A 66	2.1	8.2	3.96	90	26	Z 43	5.73	30			
109	140x72	24	B 120	2.3	16.4	3.8	72	29	Z 34	3	22-25-30			
110	140x80	24	B 143	2.75	10.9	4.5	80	28	Z 42	3.8	26			
110 D	150x96	36	A 65	2.8	13.2	4.7	96	28	Z 42	5.9	30-36			
110 DM	152x96											14.2		
111 D	150x90	36	A 76	2.3	13.7	4.17	90	28	Z 47	5.1	26-33-36-38			
111 DM	152x80											14.7		
111 E	150x80	24	A 115	2.5	19.5	4.32	80	18	Z 68	5.86	33-35-36			
111 EM	152x80											20.5		
111 H	150x103	36	A 77	2.5	9	4.4	103	42	Z 42	3.8	30-36			
111 HM	152x103				10									
112 C	160x90 (158/158)	36	B 92	2.53	12.8	4.5	99	34	Z 62	3.75	21.65-25-25.3			
112 C/1									Y 16	4.11				
115	173x103	36	A 92	2.5	17.7	4.94	103	28	Z 55	6.1	30-38			
115 R	170x103				16.2									

